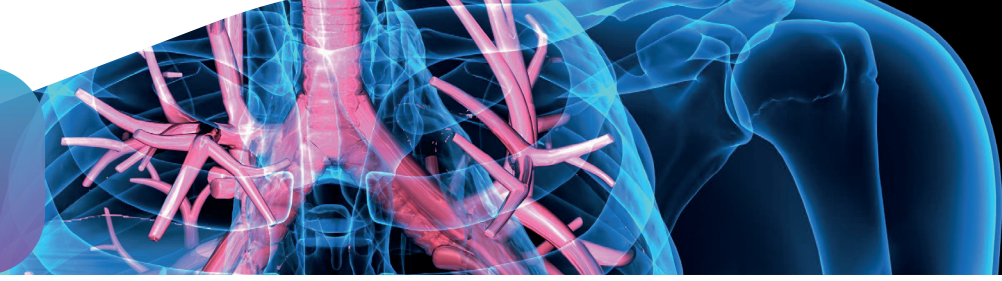
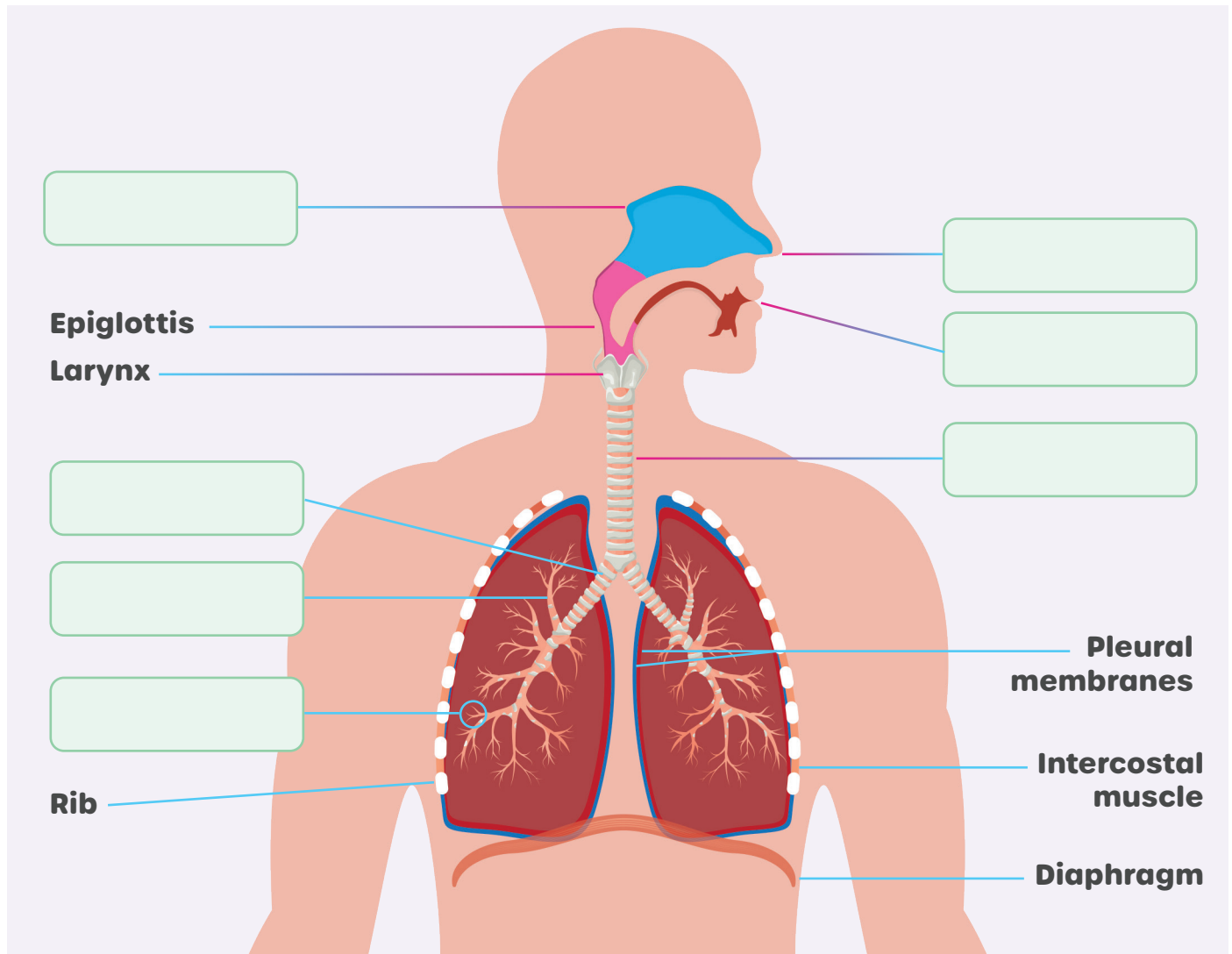


ACTIVITY SHEET



KS1-2: THE RESPIRATORY SYSTEM

Can you match the words below with the parts of the body?



Nose

Bronchus

Bronchioles

Mouth

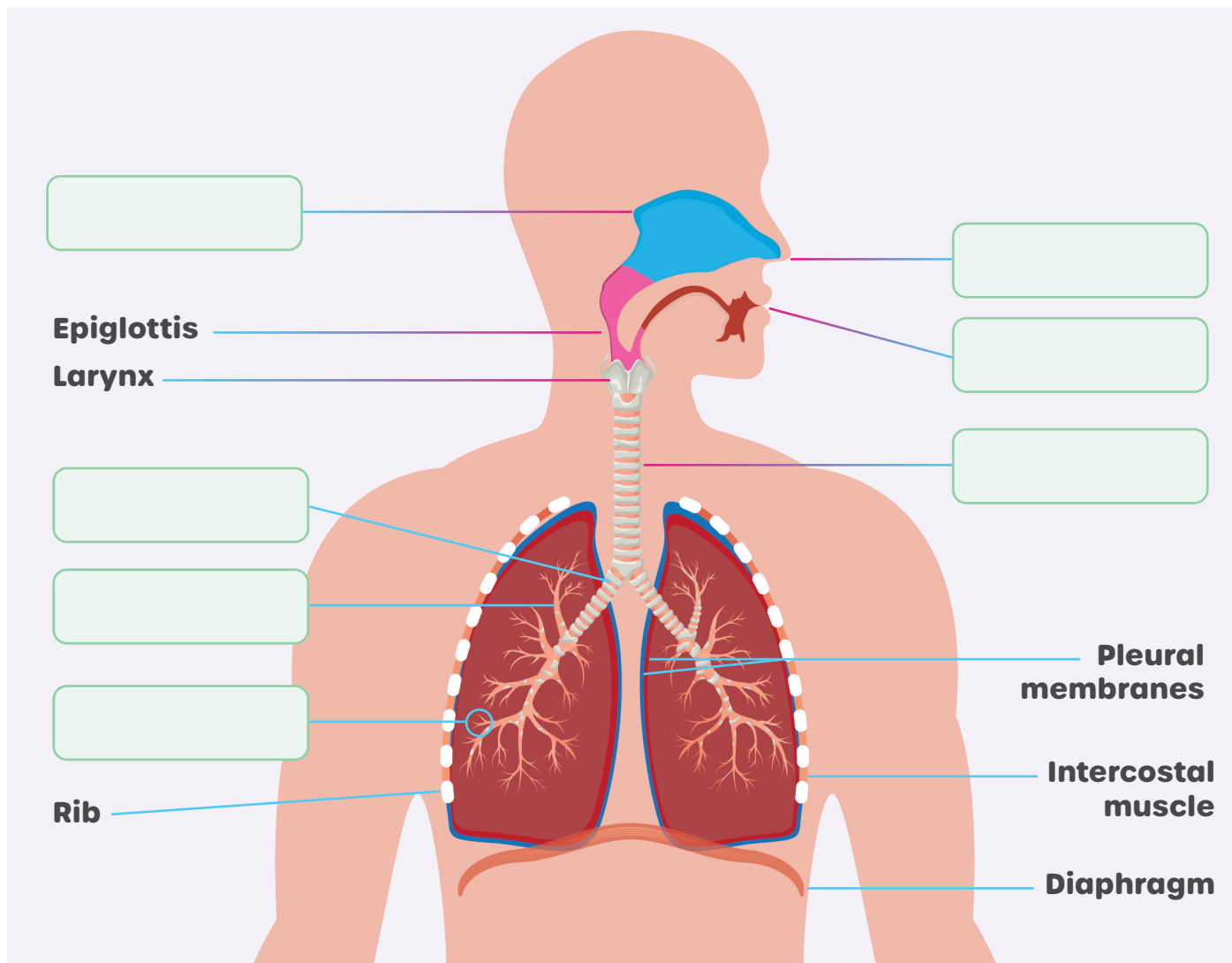
Alveoli

Trachea

Nasal passages

KS4-4: THE RESPIRATORY SYSTEM

1. Fill in the parts of the body.

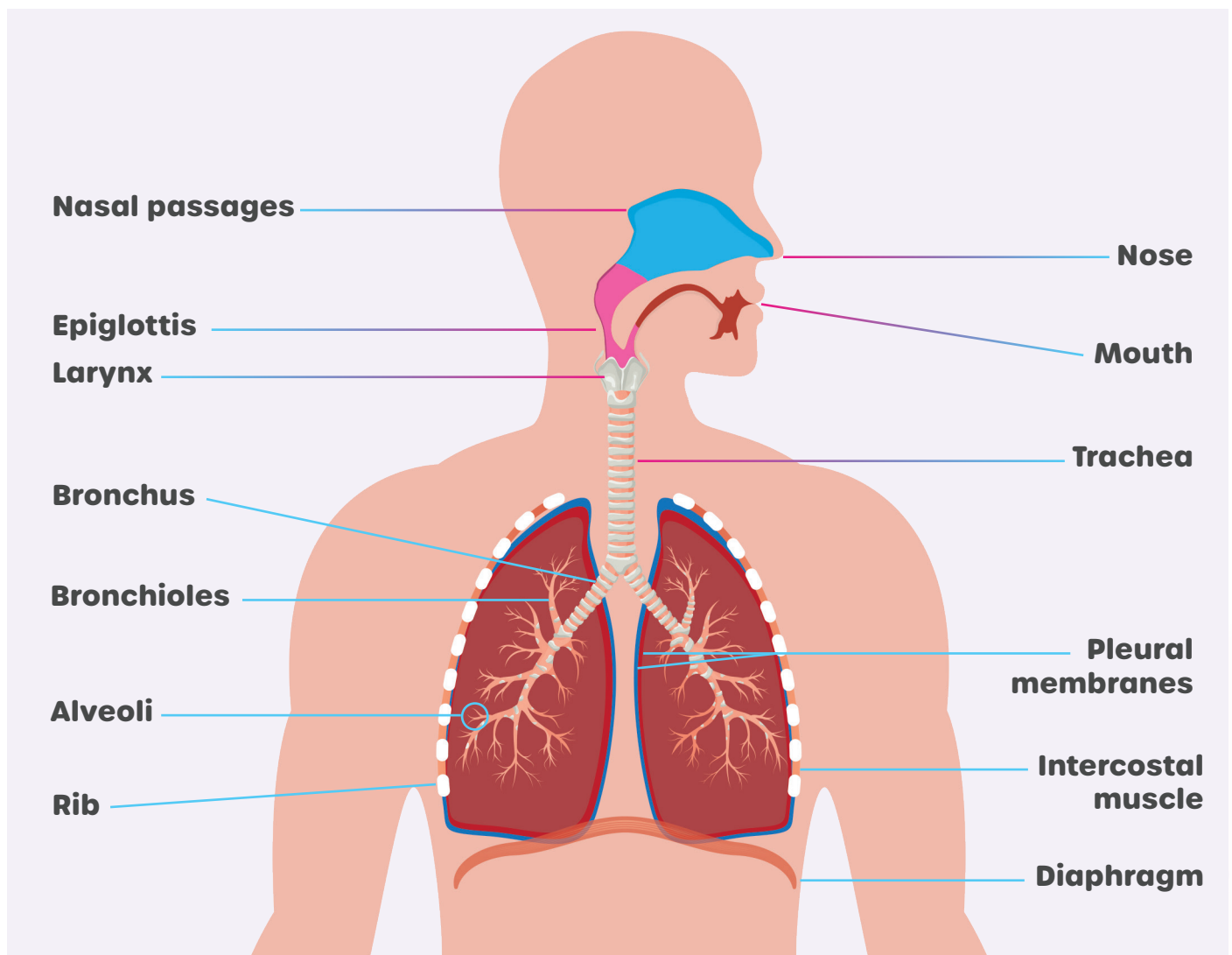


2. Once you have filled in the gaps, write down the function of each of the missing components of the respiratory system.

Nose	Used for smelling and breathing. It also warms and moistens the air for the lungs.

3. Research and write down the function of each of the following: epiglottis, larynx, intercostal muscle, pleural membranes, rib.

THE RESPIRATORY SYSTEM: ANSWERS



Mouth:

Used for eating and drinking. Can also be used for breathing, especially when the nose has been injured or is blocked i.e., during infection.

Nasal passages:

Hollow spaces in the skull around the nose, cheeks, and forehead that act as a filtration system for the air. These passages are lined with mucus to trap particles and allow mucus drainage.

Trachea (windpipe):

The main vessel into the lungs which is also lined with mucus.

Bronchus:

Vessels branching off the trachea.

Bronchioles:

The smallest vessels in the lung, which lead to the alveoli.

Alveoli:

Small sacs at the end of the bronchioles where gas exchange happens.