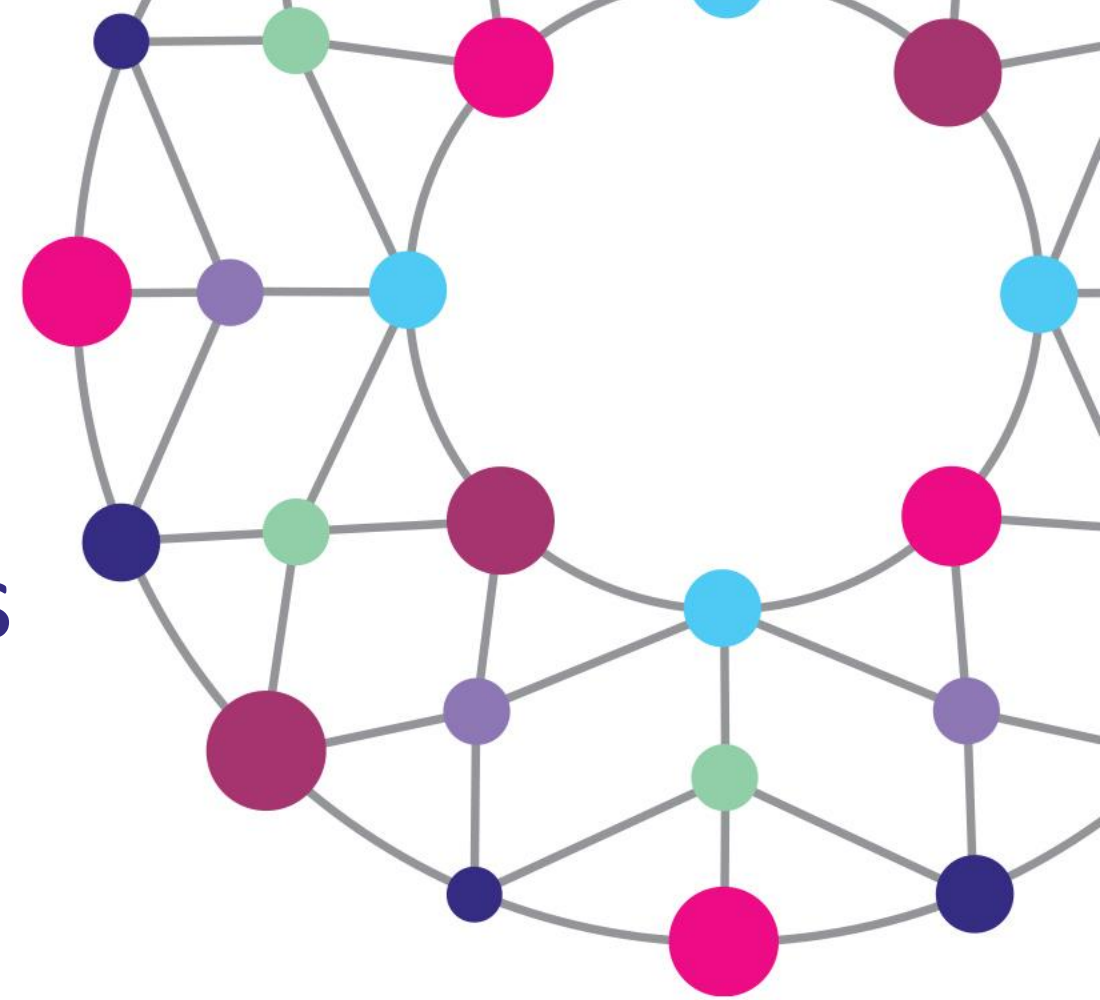




Indoor/Outdoor Bioaerosols Interface and Relationships Network - BioAirNet



Grant Ref: NE/V002171/1





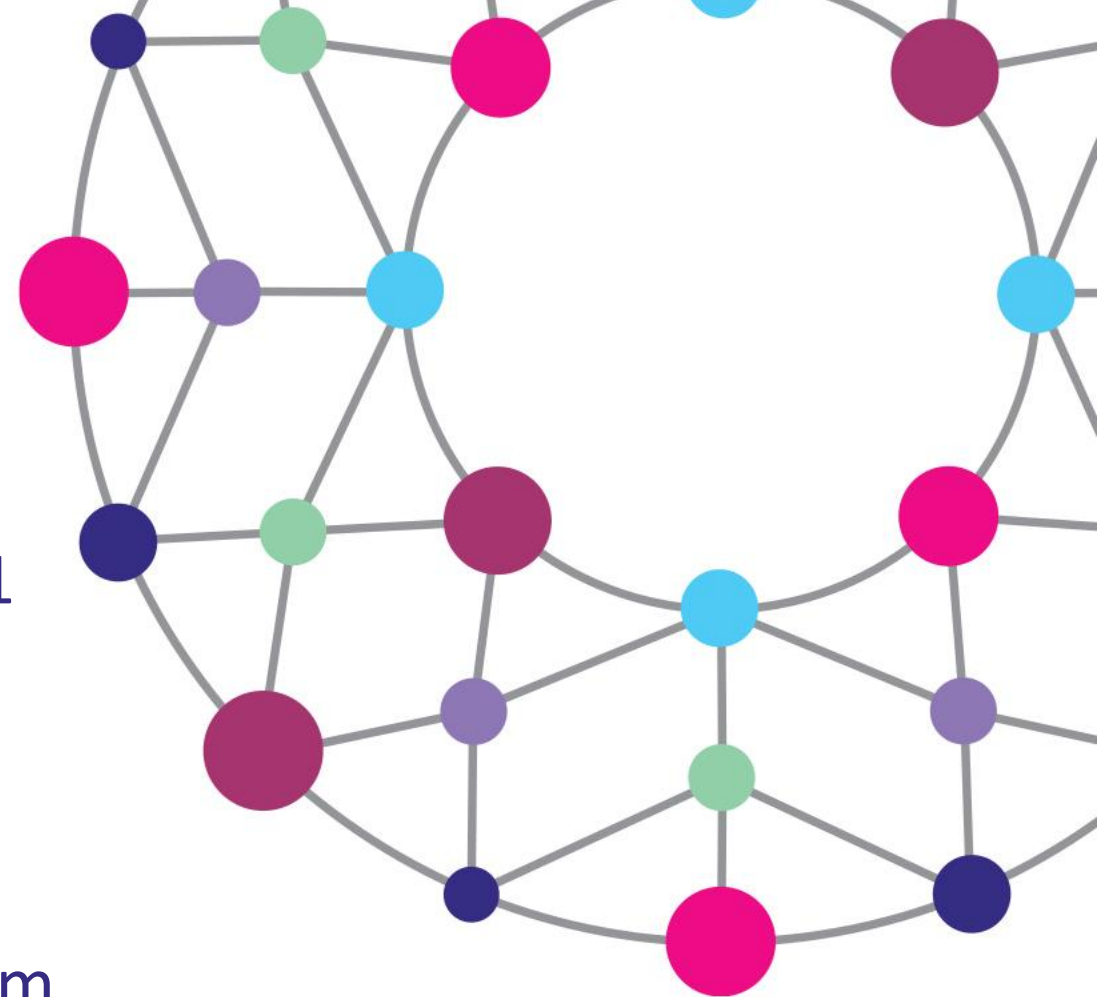
First thematic workshop - BioAirNet Theme 1

22 February 2021

Biological particulate matter sources and dynamics across the indoor-outdoor continuum

Sean Tyrrel & Ian Colbeck

Grant Ref: NE/V002171/1



Who are we?



Prof Frederic Coulon
(PI, Cranfield University)



Dr Gill Drew
(Co-I, Cranfield University)



Prof Sean Tyrrel
(Co-I, Cranfield University)



Prof Ian Colbeck
(Co-I, University of Essex)



Dr Corinne Whitby
(Co-I, University of Essex)



Prof Simon Jackson
(Co-I, Plymouth University)



Prof Mark Lemon
(Co-I, De Montfort University)



Dr Philippa Douglas
(Co-I, Public Health England)



Prof Kamaldeep Bhui (CBE)
(Co-I, University of Oxford)



Dr Zaheer Ahmad Nasar
(Researcher Co-I and Network
Manager, Cranfield University)



Dr Emma Marczylo Public
Health England



Prof Rob Kinnersley
(Environment Agency)

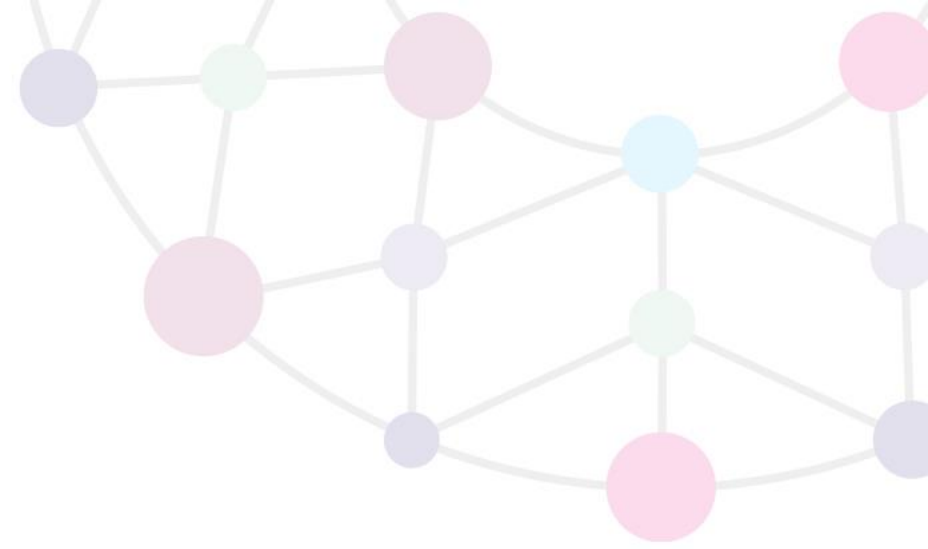


Dr Simon Parker (dstl)



Network's Aim

- To act as the leading voice for the UK BioPM science community by taking a transdisciplinary approach to understand the complexity and connectivity among people, BioPM exposure and the indoor/outdoor continuum
- To inform the development, prioritisation and assessment of environmental and health interventions



Network's Objectives

- **To coordinate, widen and inform community interactions** across academic, business and other community-based stakeholders
- **To promote discovery science** that underpins pressing scientific questions on the indoor/outdoor air bio-exposome and impacts on health, and provide a unique opportunity for in-depth cross fertilization of knowledge and cross-disciplinary collaboration;
- **To attract and stimulate the next generation of academic leaders;**
- **To develop effective engagement pathways** with all stakeholder groups through collaborative research projects and knowledge exchange activities;
- **To translate the knowledge of the network beyond the UK**



Four interconnected themes

Theme 1: BioPM sources & dynamics across the indoor-outdoor continuum

Chairs Prof Ian Colbeck (Essex) & Prof Sean Tyrrel (Cranfield)

Theme 2 BioPM sampling & characterisation

Chairs Dr Corinne Whitby (Essex) & Prof Frederic Coulon (Cranfield)



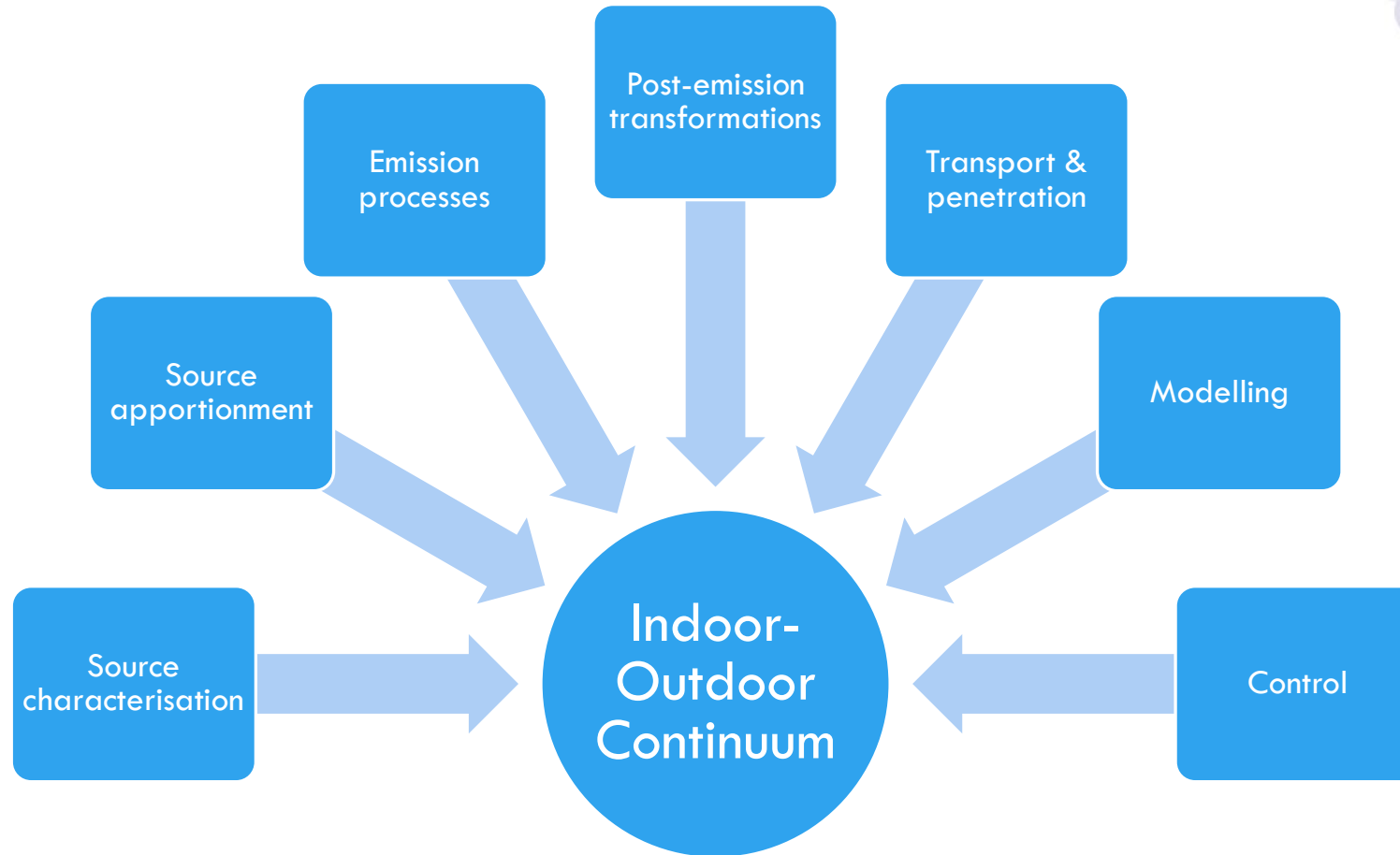
Theme 3: Human Health, behaviour & wellbeing

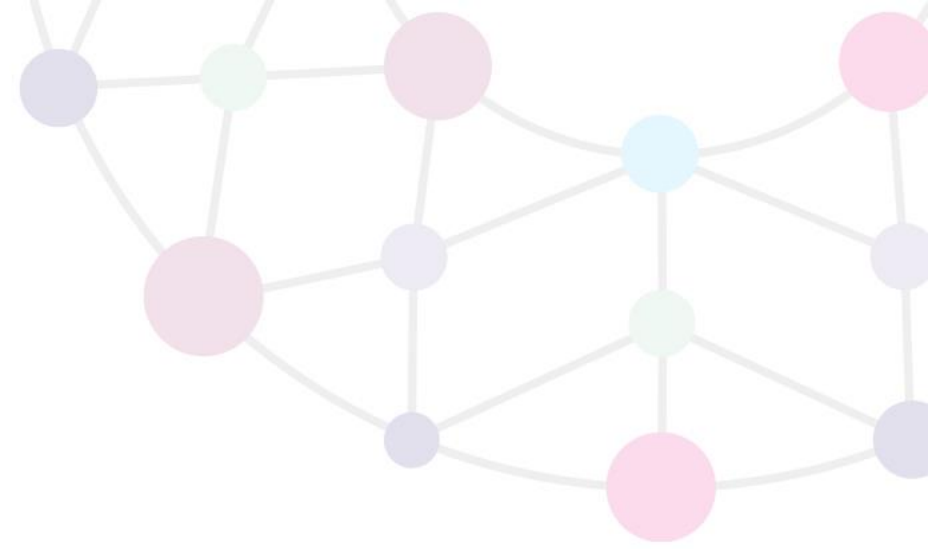
Chairs: Dr Philippa Douglas & Dr Emma Marczylo (PHE), Prof Kamaldeep Bhui (Oxford) & Prof Simon Jackson (Plymouth)

Theme 4: Policy & Public Engagement

Chairs: Dr Gill Drew (Cranfield) & Prof Mark Lemon (De Montfort)

Theme 1 potential scope





Deliverables?

- What we promised.....
 - A “white paper” (position paper) addressing:
 - Research priorities on BioPM sources and fate across indoor-outdoor continuum
 - Future sources & dynamics scenarios (climate, land use and buildings regulations)
 - Modelling needs in this context
-but what would the network value?